



Calypso Orchid near Divide Curt Nimz

April 3, 2024

Dear Colleague,

Spring has arrived! See what there is to this month in this wild news round-up:

- 4/13 John Stansfield Retirement Party!
- 4/18 Ecology of our Preserves Webinar by SPLT
- 4/28 Red Canyon and Garden Park Hike, a BLM Wildlands Outing
- The Colorado Trail reveals effects of climate change
 - Our Colorado Trail in Crisis event recording is available
 - Pre-order Dr. Ford's *The Colorado Trail in Crisis* book!
 - WC Climate Change Resilience Project 2024 Update
- Check out CPW's Wolf Activity Map!

Read on ...

EVENTS

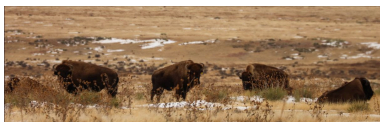


John Stansfield Retirement Party!
Saturday, April 13, 2:00 - 4:00 PM
Fountain Creek Nature Center

John Stansfield, Wild Connections board member, former Conservation Chair of the Pikes Peak Sierra Club Group, and founder of the Central Colorado Wilderness Coalition, is retiring after 50 years of service to the environment in the Colorado Springs/Pikes Peak Region.

Join us on April 13th from 2 to 4 p.m. at Fountain Creek Nature Center to thank John for his many years of service!

Light refreshments will be served.



American bison roaming the plains of southeastern Colorado.
Photo SPLT

[Register Here!](#)

The Ecology of our Preserves Webinar by SPLT
Thursday, April 18 5:00 - 6:00 PM

Our friends at [Southern Plains Land Trust](#) are hosting a free webinar on the ecology of SPLT's shortgrass prairie preserves in southeastern Colorado.

SPLT will bring the prairie to you by presenting the ecology and conservation of the shortgrass prairie, and highlighting some of SPLT's key management and restoration work. From bison to beetles, and from cliffs to cottonwoods - come check out SPLT's world!



BLM's Garden Park Fossil Area.
Photo BLM

[More Info Here!](#)

Red Canyon/Garden Park Hike, a BLM Wildlands Outing Sunday, April 28, 10:00 AM - 3:00 PM

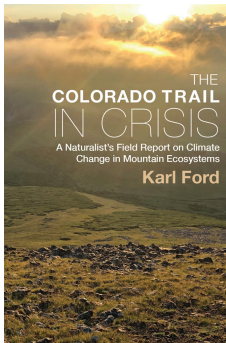
Our moderate hike at Red Canyon, north of Cañon City, will be approximately 4 miles with 400 feet elevation gain. We will also visit the dinosaur quarry at [Garden Park](#), a mixture of public and private lands allowing recreation to coexist with protection of wildlife and paleontological resources.

You will also learn about the newly created conservation and recreation designations in this area from BLM's recently completed Eastern Colorado Resource Management Plan.

For more information or to register for the hike, contact Jim Lockhart at 719-385-0045 or jlock@datawest.net.

The Colorado Trail reveals effects of climate change

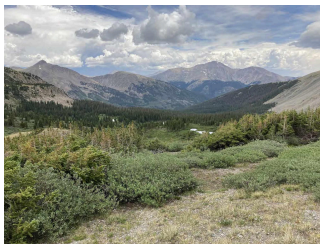
The Colorado Trail in Crisis



Dr. Karl Ford shared his journeys on the Colorado Trail and the research done in Colorado on climate change and its effects on our forests, wildlife, and watersheds. View the event video recording on our [YouTube channel](#) at youtube.com/watch?v=dHiJZSQLW6I.

His findings are in his book *The Colorado Trail In Crisis - A Naturalist's Field Report on Climate Change in Mountain Ecosystems*. Get a special deal on Karl's book at wildconnections.org/httpswildconnections-bloomkindfulcom-2

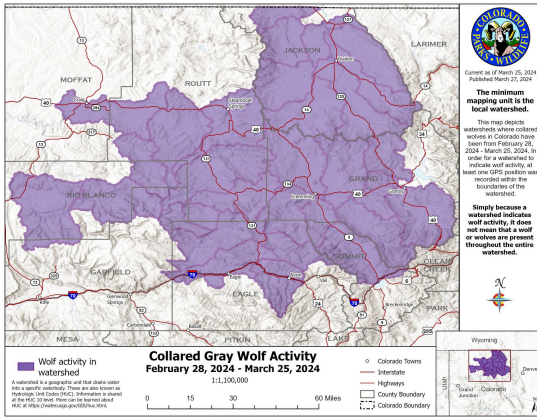
Central Colorado Climate Resilience Project 2024



Alison Gallensky updated Wild Connections work to Identify and protect places in Central Colorado where biodiversity will continue to thrive under changing climate conditions. [Download the slide deck here.](#)

And find more info on our Climate Resilience project at wildconnections.org/conservation/climate-change.

Updated CPW Gray Wolf Activity Map



CPW collared gray wolf activity recorded from Feb. 28 to March 25, 2024.

Every month, Colorado Parks and Wildlife releases an updated map of collared gray wolf activity.

The map depicts watersheds where collared wolves in Colorado have been for the past 30 days.

Find more info and a larger map at cpw.state.co.us/learn/Pages/Wolves-Activity-Map.aspx

CPW also has a new podcast episode out on [The Colorado Gray Wolf Reintroduction on their Colorado Outdoors Podcast.](#)

From all of us,
Jim, Alison, Claude, Kristin, John and Jean
 Wild Connections Leadership Team

Our Contact Information

{{Organization Name}}
 {{Organization Address}}
 {{Organization Phone}}
 {{Organization Website}}

{{Unsubscribe}}



Donate

We recognize our area as the ancestral lands of the Ute, Cheyenne, Jicarilla Apache, Arapaho and other indigenous peoples.