

In This Issue

[New Roadless Acres](#)

[Reclaiming Wildways](#)

[Upcoming Hikes & Events](#)

Join Our List!

Did someone forward you this email?

Sign up to ensure you always get this monthly E-News

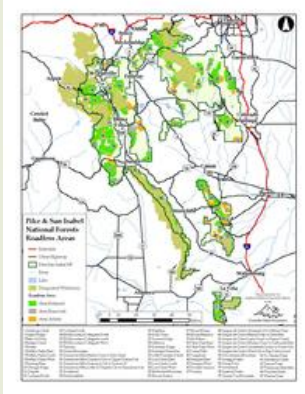
[CLICK HERE](#)

Dear Michael,

This has been an exciting summer - the Pike-San Isabel National Forest has **added approximately 100,000 acres** to its Roadless Inventory, with much credit to Wild Connections volunteer mappers. Our **first restoration program** with volunteers was a smashing success. Read more below, and thank you all!

**Roadless Acres Added to Pike-San Isabel  
New maps show 100,000 new acres**

Wild Connections' volunteers mapped 100 roadless areas of the Pike-San Isabel. These inventories were given to the Forest Service and other agencies. The draft boundaries show the proposed addition of **more than 103,000 acres** to the US Forest Services' Roadless Inventory!



In early August, the Forest Service and the Colorado Division of Natural Resources released new draft roadless areas for the ongoing Colorado Roadless Rule process. There were **significant changes** in the Pike-San Isabel National Forest Inventoried Roadless Areas (IRAs).

The thousands of hours of mapper travels and Wild Connections advocacy have paid off in potential protection for more land, better watershed health and more secure wildlife habitat.

Go to [www.wildconnections.org](http://www.wildconnections.org) to view the maps...

**Reclaiming Wildways Phase I  
An enormous success**

Wild Connections launched a new program this summer, **Reclaiming Wildways** with the goal to literally connect people to the landscape through on-the-ground, hands-on restoration projects. Wild Connections chose the closed ATV route loop in the Trout and Eagle Creek drainages for our first project site due to severe impacts on water quality, erosion, and the presence of three threatened species.



During five work days, a total of 80 volunteers helped **restore 2.25 linear miles of trail, resulting in 4.95 acres of critical habitat reclaimed!** Additionally, 242 pounds of native grass seed were hand broadcast, 85 bales of straw (3,500 pounds) disbursed to shade the seed, 347 pounds of Biosol organic fertilizer spread, and countless tree branches were placed across sections of the rehabbed area.

Wild Connections is already planning for restoration work during 2010.

**Stay tuned to E-News for more details!**

## Upcoming Hikes & Events Come Join Us!

### Unique Field Trip Opportunity Pawnee Montane Skipper Inventory Tuesday, September 1st

Wild Connections is partnering with the US Fish and Wildlife Service to assist in inventories of this threatened butterfly species. Volunteers will be teamed with an agency specialist, and will survey a specific track of land looking for this elusive butterfly.



No prior experience is needed, training will be held the morning of the event. The hike to the monitoring track is over prior Hayman burn area, with no trail, and the hike length varies. This is an all-day event, close to Deckers, Colorado. Inventories are also being held on Sept 2nd, 3rd and 4th.

For more details, please call **Michael Rogers at 719-328-9234**.

### Iron Fen Restoration Geneva Basin Volunteers needed August 29-30, 2009

Take part in a unique subalpine restoration project to help protect a very rare and interesting type of wetland that is known to exist **ONLY IN COLORADO!**

The Geneva Basin Iron Fen is one of about 8 known in the world. All of them are in Colorado. Teams will be working to restore about 1 mile of roads that currently have an impact on the fen. Work will include spreading seeds of native subalpine plants, installing erosion matting, constructing check dams, and having fun.

This is a **Wildlands Restoration Volunteers** sponsored project. Register for this event by **calling 303-543-1411**.

**More hikes are scheduled!** Go to [www.wildconnections.org](http://www.wildconnections.org)

### In Closing:

Thank you for your passion for Colorado's public lands! If you have comments or questions about our new *E-News* or the topics above, please email Michael Rogers at [Michael@WildConnections.org](mailto:Michael@WildConnections.org).

Sincerely,

*Michael Rogers*

*Director of Policy, Programs & Outreach*  
Wild Connections

*Wild Connections is a 501(c)3 non-profit organization. Our mission is to identify, protect and restore lands of the Upper Arkansas and South Platte watersheds to ensure the survival of native species and ecological richness.*