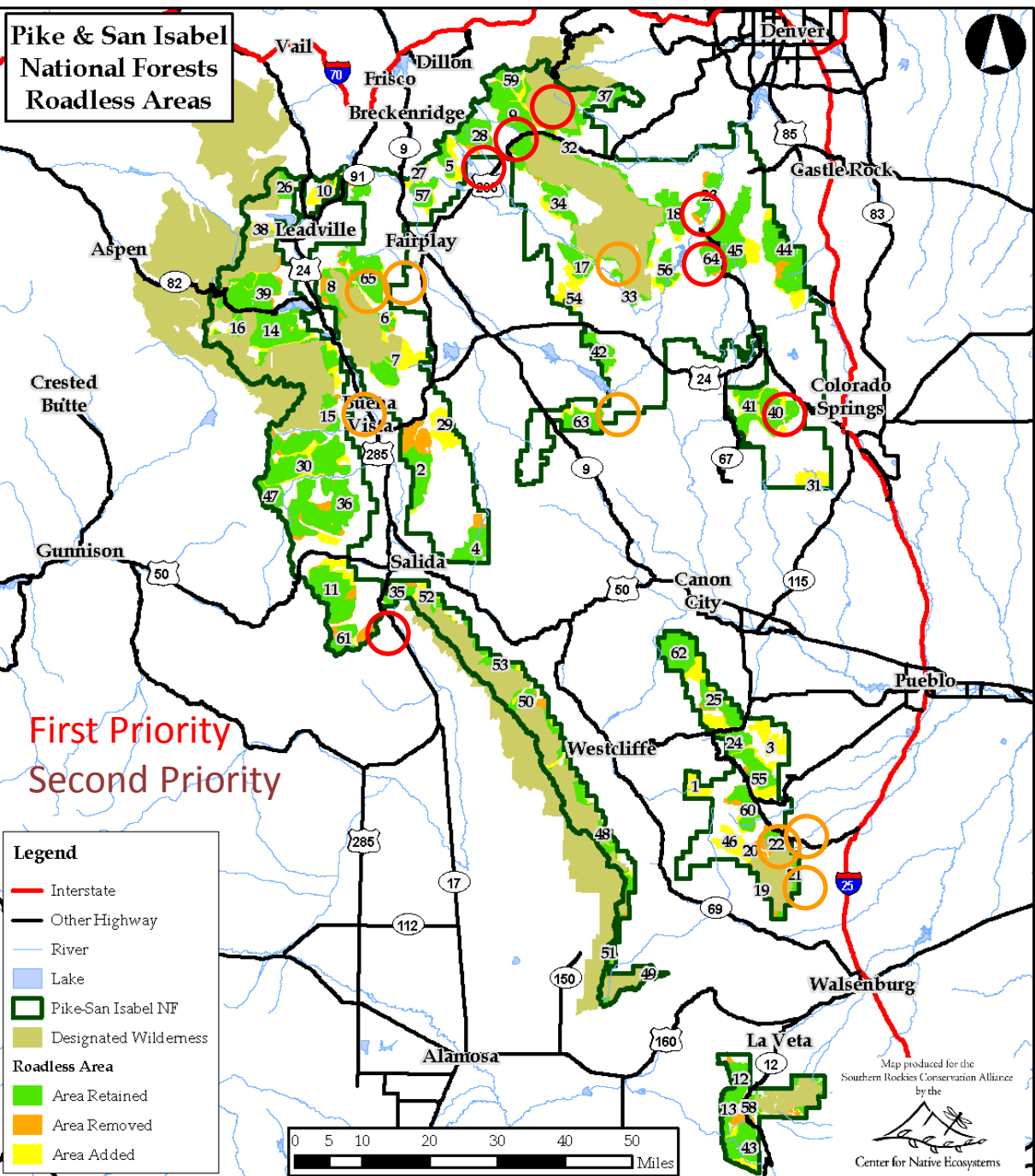


Pike & San Isabel National Forests Roadless Areas



First Priority
Second Priority

Legend

- Interstate
- Other Highway
- River
- Lake
- Pike-San Isabel NF
- Designated Wilderness

Roadless Area

- Area Retained
- Area Removed
- Area Added

- Pike NF
- 5 Boreas
 - 8 Buffalo Peaks West
 - 9 Burning Bear/Square Top
 - 17 Farnum/Schoolmarm Mountain
 - 18 Green Mountain
 - 28 Jefferson
 - 41 Pikes Peak West
 - 56 Sheep Rock
 - 63 Thirtynine Mile
 - 65 Weston Peak

- San Isabel NF north
- 15 Elk Mountain-Collegiate/Frenchman Creek/Pine Creek
 - 61 Starvation Creek/ Antora Peak

- San Isabel NF south
- 19 Badito Cone-Dry Creek/Badito Cone/Santana Butte
 - 20 Cisneros Creek-Upper Turkey Creek/ Cisneros Creek
 - 22 Little St. Charles-Greenhorn Creek /Greenhorn Creek

Each area has a different task, usually just part of the boundary

Map produced for the Southern Rockies Conservation Alliance by the Center for Native Ecosystems