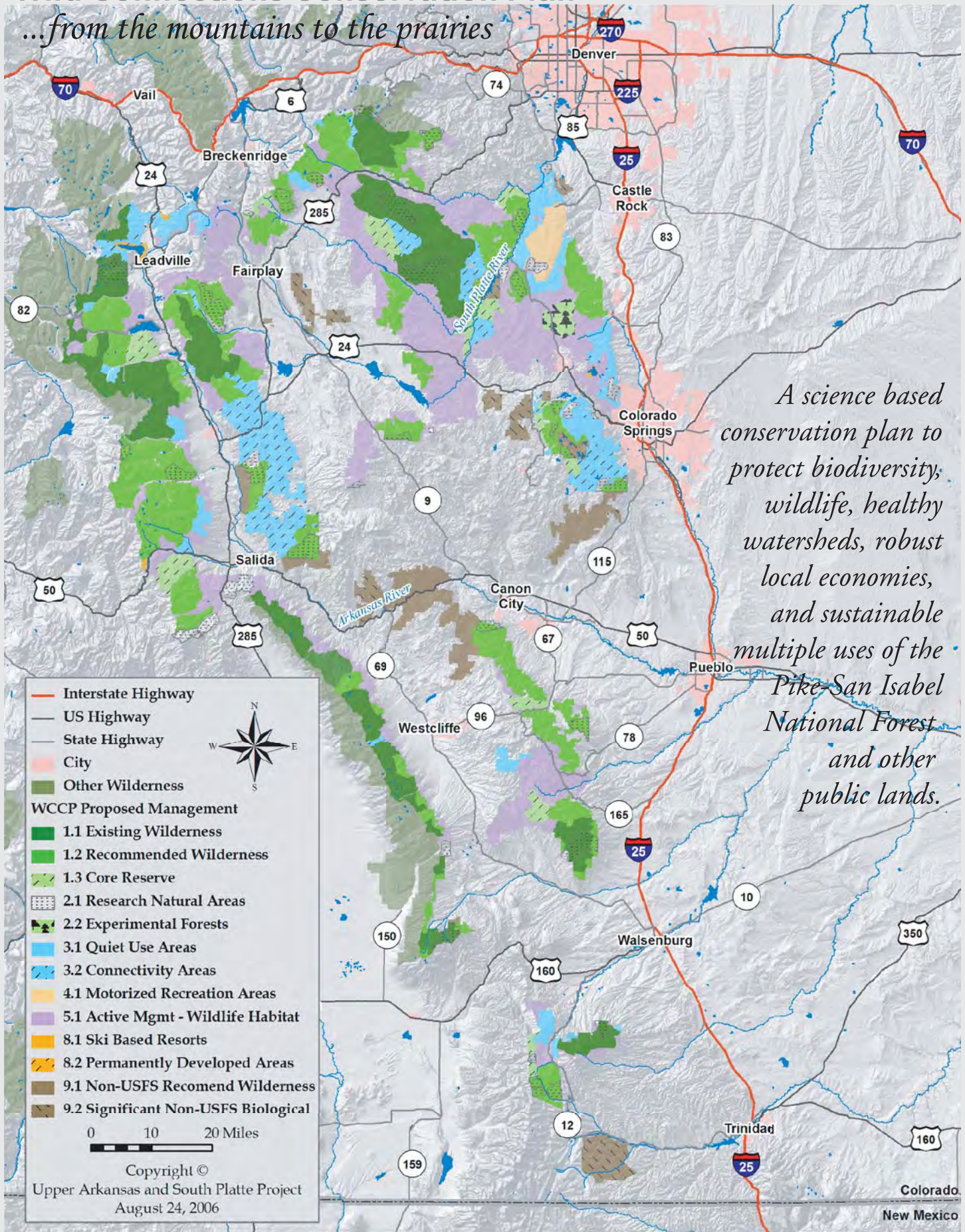


Wild Connections Conservation Plan

...from the mountains to the prairies



A science based conservation plan to protect biodiversity, wildlife, healthy watersheds, robust local economies, and sustainable multiple uses of the Pike-San Isabel National Forest and other public lands.

	Interstate Highway
	US Highway
	State Highway
	City
	Other Wilderness
WCCP Proposed Management	
	1.1 Existing Wilderness
	1.2 Recommended Wilderness
	1.3 Core Reserve
	2.1 Research Natural Areas
	2.2 Experimental Forests
	3.1 Quiet Use Areas
	3.2 Connectivity Areas
	4.1 Motorized Recreation Areas
	5.1 Active Mgmt - Wildlife Habitat
	8.1 Ski Based Resorts
	8.2 Permanently Developed Areas
	9.1 Non-USFS Recommend Wilderness
	9.2 Significant Non-USFS Biological

0 10 20 Miles

Copyright ©
Upper Arkansas and South Platte Project
August 24, 2006

The Wild Connections Conservation Plan will...

Protect and restore biodiversity:

- ✓ Protect important biological sites.
- ✓ Ensure that the forest provides for the needs of large, far ranging animals.
- ✓ Balance representation of ecosystems in protected areas by including lower elevation types.
- ✓ Establish forty new Research Natural Areas.



Preserve large expanses of roadless land in a network of protected core areas connected by wildlife linkages:

- ✓ Manage 446,700 acres of designated Wilderness areas to meet national standards.
- ✓ Protect 648,300 acres in 53 new Wilderness areas and additions.
- ✓ Incorporate 14 areas totaling 94,500 acres as Core Reserves.
- ✓ Provide wildlife linkages across 203,500 acres and reduce road densities by closing and rehabilitating unneeded routes.



Promote the benefits of healthy ecosystems and watersheds that sustain robust local economies, ensure high water quality, provide clean air, and improve the quality of life:

- ✓ Facilitate ecologically sustainable multiple uses of the Pike-San Isabel National Forest that will foster long-term economic stability for tourism, ranching, and local businesses.
- ✓ Protect watersheds in the Pike-San Isabel that replenish the water table for wells and feed municipal water supplies down stream.



Provide balance among multiple uses:

- ✓ Ensure that recreation, logging, grazing, mining, energy development, and other human-oriented activities are located in suitable areas and will sustain a healthy forest for the indefinite future.
- ✓ Foster recreation uses that have minimal impact on the natural landscape and wildlife, including 150,500 acres in 20 Quiet Use Areas.
- ✓ Focus vehicle-oriented recreation on designated roads and trails and intensive recreation at special motorized and ski sites.
- ✓ Provide developed campgrounds, dispersed camping, opportunities for wildlife watching, fishing, and river and lake recreation.



Allow natural processes such as fire, seasonal cycles, and interactions among plants and insects to aid renewal of the land:

- ✓ Allow natural processes to continue without man's intervention in the roadless back country.
- ✓ Design projects in areas close to human habitation to focus on highest risk areas and mimic natural processes.
- ✓ Adopt wildfire prevention plans for the wildland-urban interface to protect human life and property.



Acknowledge the intrinsic value of wild landscapes that sustain the human spirit and provide for all our fellow creatures in an interconnected, interrelated whole.

More information about the Wild Connections Conservation Plan and detailed maps are available at www.wildconnections.org or contact Upper Arkansas and South Platte Project 1420 Pinewood Road, Florissant CO 80816 wildconnections@wildconnections.org 719-686-5905

Photos by John Stansfield, Mike Dwyer, Mike Kienast, Jean Smith and Dave Jones